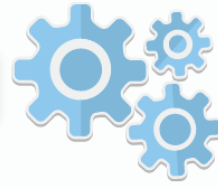


THE POWER OF MATH

(THE M IN STEAM)



NATIONAL CITY
16 WEEKS OF
STEAM

16 WEEKS OF EXPLORATION & DISCOVERY
IMPACTING HOME, SCHOOL, & THE ENVIRONMENT

REAL-WORLD MATH & COMPUTATIONAL THINKING



Parent Guide



How do I use these activities?

We have designed these activities to be used with the entire family. Our goal is for you to have fun and learn more about STEAM. Each activity will provide you with directions, materials you need, and resources.



Community Events/Activities

Each month there will be community activities (See Calendar [HERE](#) on the website) and events. By attending these and completing your project, your family can earn tickets to local area attractions. See the calendar for each month's community activities.

Parent Video



Be sure to check out our parent video series for overviews, tips, ideas, and more [HERE](#).



Important Links

Website: <https://nc16weeksofsteam.org/>

Activities: <https://nc16weeksofsteam.org/curriculum-download/>

Calendar: <https://nc16weeksofsteam.org/events/>





16 WEEKS OF EXPLORATION & DISCOVERY
IMPACTING HOME, SCHOOL, & THE ENVIRONMENT



Parent Activity Recommendations

For this unit, your student will complete activities held at various locations with all materials for use! We have given grade-level recommendations, but feel free to work with your student on any or all of the activities. Younger students will need support. You will need to check the Events Calendar for days and times to do the activities.

Tips

- You will need access to the Internet for many of these activities and projects.
- You and your child will be creating with math this month.
- Take pictures along the way to document your progress!

Family Project Sharing

- We will have a special day for you to share your projects. Please refer to the calendar for the dates.
- For families that attend we will be giving away tickets to local attractions (i.e. Fleet Space Theater, Midway Museum, Aerospace Museum).



STEM Activities w/ Math Shelf
K-2 grades

➔ Go to <https://www.mathshelflearning.com/> to select a free project.

A Head Start in Math

Math Shelf is an individualized, sequenced, and adaptive early math program that prepares children for lifelong success.



More Learning

Children that play Math Shelf for 20 minutes each week learn two years of mathematics in just one school year.



Proven Results

Three published studies demonstrate that Math Shelf produces large increases in math achievement for English Learners, Head Start students, and state funded preschoolers.



A Better Future

Preschool mathematics knowledge is the best predictor of academic success and lifetime earnings potential.



STEM Activities w/Levered



Go to https://app.levered.com/steam_dashboard to select a free project.

The screenshot shows the Levered app interface. At the top, there are three dropdown menus: 'Grade 1st', '1-1st Grade Unit 1-Understanding #', and '1.1_Early-Center 1'. A central instruction box says: 'Click the box of water bottles to add more water bottles until there are 3 bottles in the cubbies.' Below this is a 'Water Bottles' box with two bottles. The main area features a 2x5 grid of pink cubbies. The top-left cubby contains one blue water bottle, and a blue arrow points to it from below. On the right side, there are two buttons: 'Pause Activity' (yellow) and 'Watch Again' (green). On the left side, there are two progress bars: 'Current Unit: Unit Progress' and 'Current Activity: Lesson 1-Introduction Activity Progress'. The 'Levered' logo is visible in the bottom left corner of the app interface.

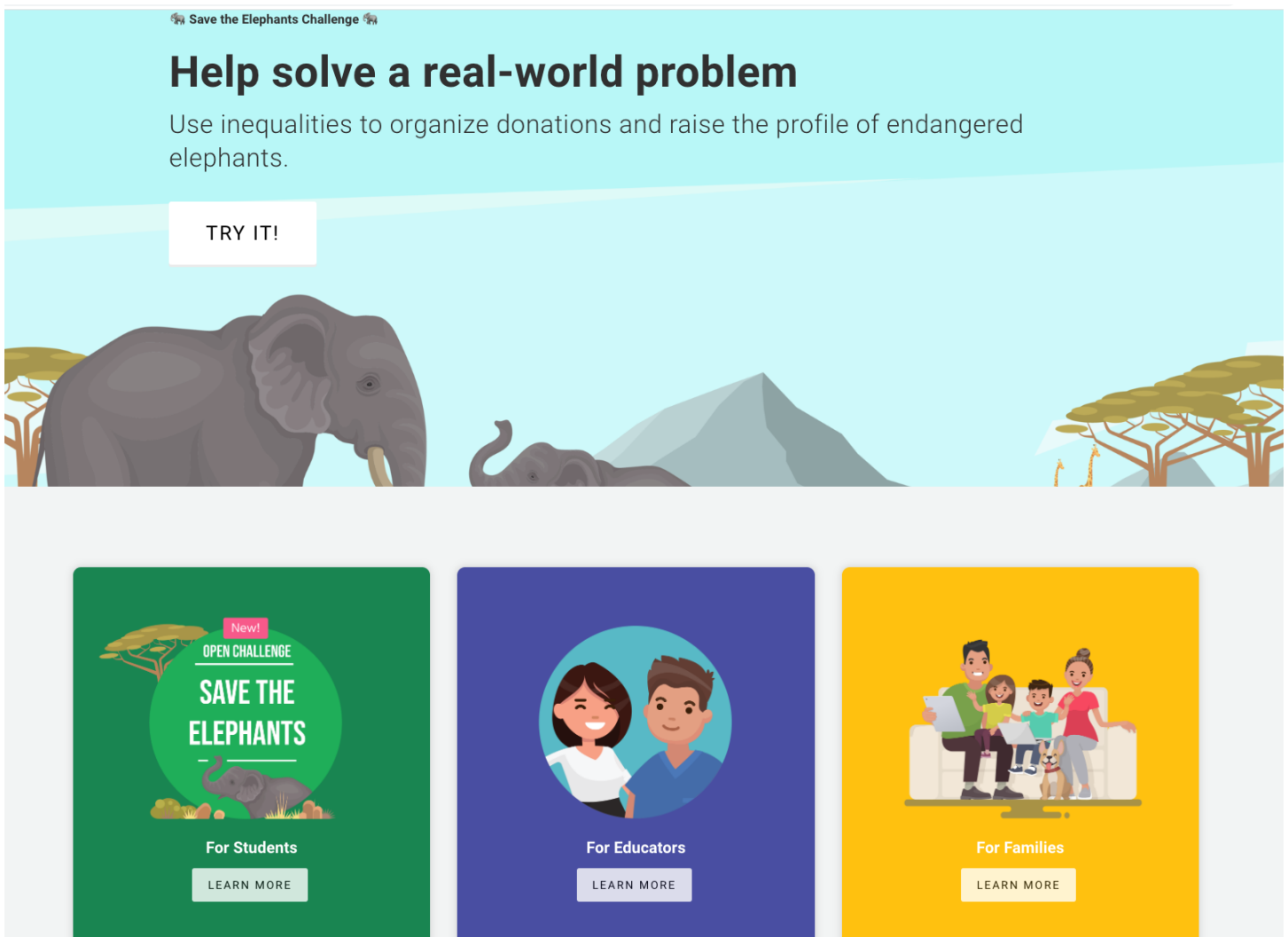
Choose an activity to get started!



Challenge Activities with Mindsets for Grades X



Go to <https://www.mindsets.com/> to select a free project.



Save the Elephants Challenge

Help solve a real-world problem

Use inequalities to organize donations and raise the profile of endangered elephants.

TRY IT!

SAVE THE ELEPHANTS

For Students | For Educators | For Families

LEARN MORE



Unit: M in STEAM

Recommended Grade Levels: PreK-8th



16 WEEKS OF EXPLORATION & DISCOVERY
IMPACTING HOME, SCHOOL, & THE ENVIRONMENT

For all events, please see the calendar!

Look for our LIVE Events on the calendar. Please refer to the [calendar](#) for specific dates and projects. You won't want to miss these interactive sessions!

Calendar Link: <https://nc16weeksofsteam.org/events/>

Unit: M in STEAM

Recommended Grade Levels: PreK-8th

Talk to a Pro



16 WEEKS OF EXPLORATION & DISCOVERY
IMPACTING HOME, SCHOOL, & THE ENVIRONMENT

Parent Activity Recommendations

Look at the [Event Calendar](#) on the website and attend the Nepris expert interviews. This is an opportunity for the entire family to learn more about this field. Use the sheet on the next page for students to organize their questions, ideas, and more during the interview.

Tips

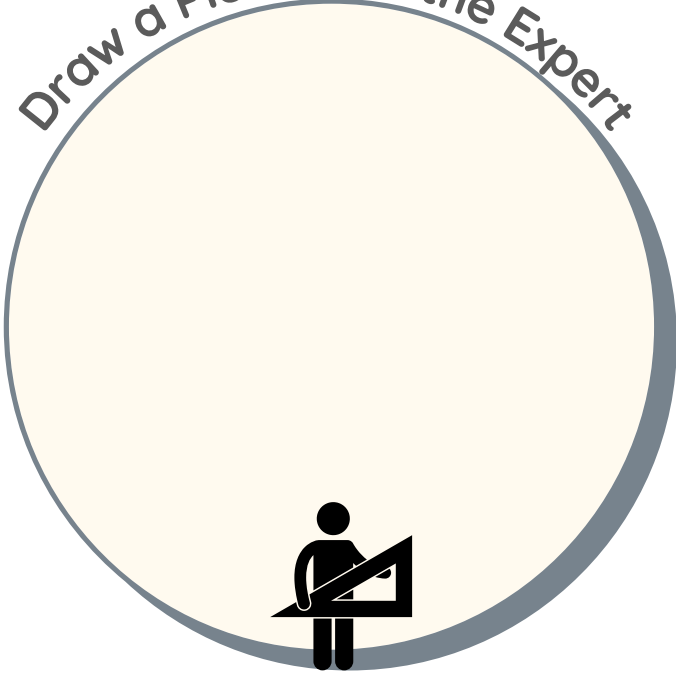
- Make a copy for each person.
- Write down questions and any thoughts before the interview.
- Students can work on this sheet before, during, and after the interview. It is designed to be a fun graphic organizer, so don't worry if your student wants to do something else.
- Encourage your student to discuss ideas and thoughts on what the expert shared.



nepris

INTERVIEW WITH AN EXPERT

Draw a Picture of the Expert



Name & Title of Expert

Empty rectangular box for writing the expert's name and title.

Describe what this person does

Large empty rectangular box for describing the expert's role.

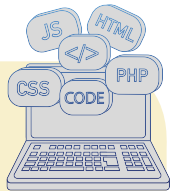
3 Things You Learned:

Orange rounded rectangular box for listing three things learned.

Questions for the Expert



Large rounded rectangular box with a yellow border for writing questions for the expert.



What would you like to know more about?

Large yellow rounded rectangular box for writing what to know more about.